

THIS PROPERTY IS NOT LOCATED WITHIN THE 100-YEAR FLOOD PRONE AREA AS PER F.I.R.M. NO. 51100500.

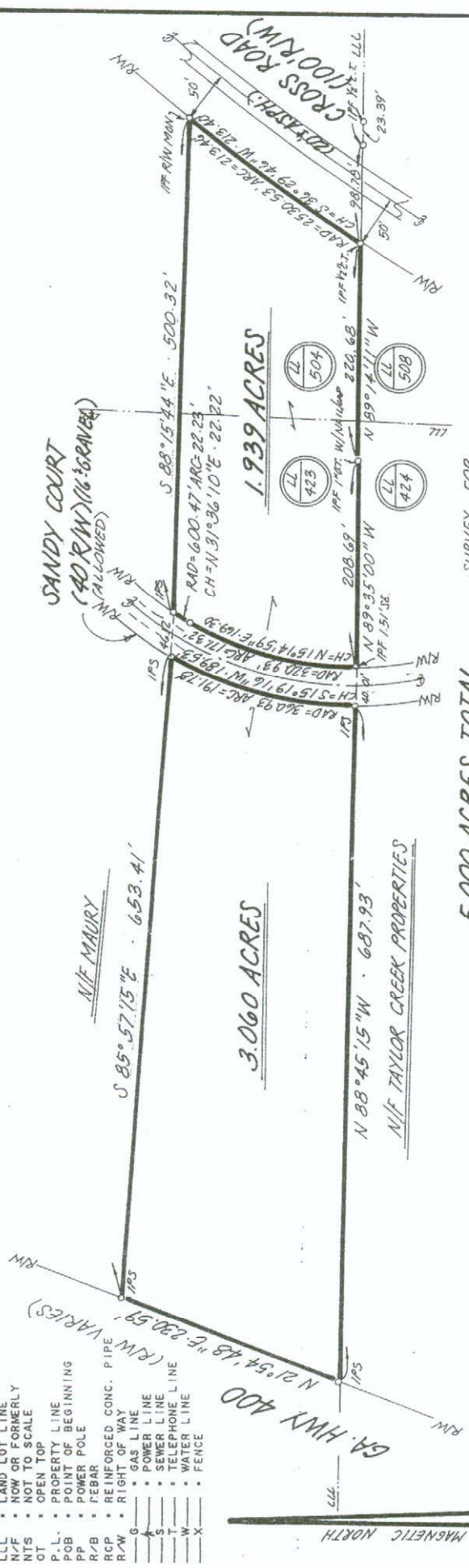
BEARINGS SHOWN ARE BASED ON ANGLES TURNED FROM A SINGLE MAGNETIC OBSERVATION AND ARE SUBJECT TO FIELD CONDITIONS.

THE FIELD DATA UPON WHICH THIS PLAT IS BASED HAS A CLOSURE PRECISION OF ONE FOOT IN 46,026 FEET AND AN ANGLE ERROR OF 3 SECONDS PER ANGLE POINT AND WAS ADJUSTED USING COMPASS RULE. THIS PLAT HAS BEEN CALCULATED FOR CLOSURE AND IS FOUND TO BE ACCURATE TO WITHIN ONE FOOT IN 880,473 FEET.

- LEGEND**
- BC CURB
 - BSL BUILDING SETBACK LINE
 - C.L. CENTER LINE
 - CMF CONC. MONUMENT FOUND
 - CMP CORRUGATED METAL PIPE
 - CT CRIMP TOP
 - EL ELEVATION (FT)
 - EP EDGE OF PAVEMENT
 - FFEL FINISHED FLOOR ELEV.
 - FH FIRE HYDRANT
 - IPF IRON PIN FOUND
 - IPS IRON PIN SET
 - LL LAND LOT
 - LLL LAND LOT LINE
 - N/F NOW OR FORMERLY
 - NTS NOT TO SCALE
 - OT OPEN TOP
 - P.L. PROPERTY LINE
 - POB POINT OF BEGINNING
 - PP POWER POLE
 - R/B REBAR
 - RCP REINFORCED CONC. PIPE
 - R/W RIGHT OF WAY
 - G GAS LINE
 - P POWER LINE
 - S SEWER LINE
 - T TELEPHONE LINE
 - W WATER LINE
 - X FENCE

NOTES / REFERENCES

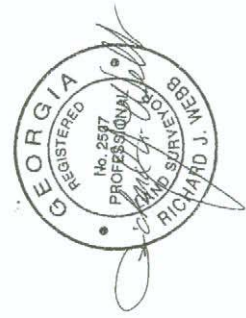
- 1) PLAT FOR CHARLES J. MAURY BY FARLEY-COLLINS ASSOC. DATED 7/16/90.
- 2) IPS'S NOTED ARE #4 REBARS.



5.000 ACRES TOTAL

SURVEY FOR

OSCAR EVANS
 LAND LOTS 423, 504
 14TH DISTRICT 1ST SECTION
 FORSYTH COUNTY, GEORGIA
 SCALE: 1"=100' APRIL 27, 1995



TECHNICAL LAND SERVICES, INC. LLP
CHARD WEBB & ASSOCIATES
 Land Surveying Consultants

P.O. BOX 561 CUMMING, GA 30130 (404) 889-6103

Survey authorized by: JIM FOXKORTHY

JOB NO. 95193