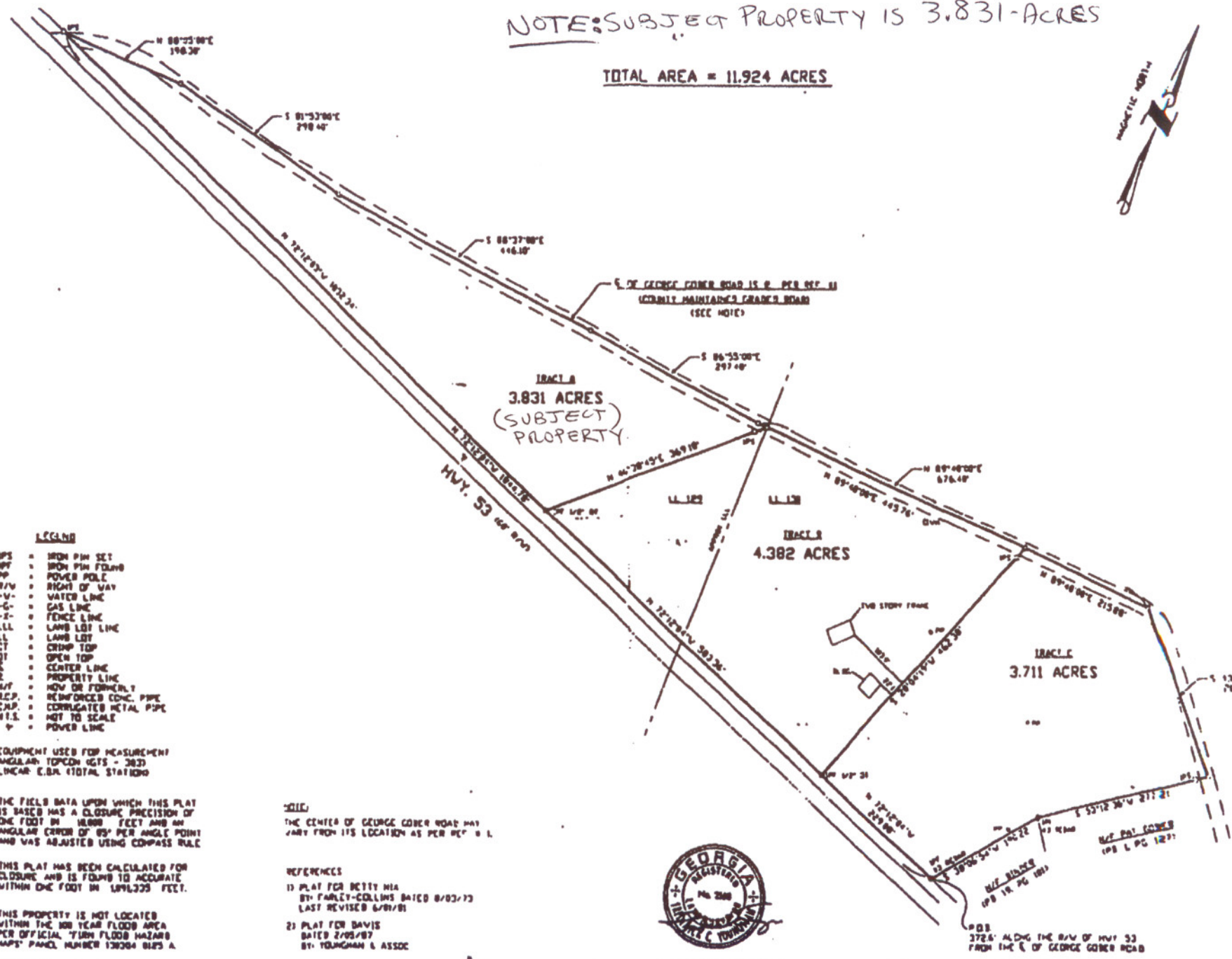


NOTE: SUBJECT PROPERTY IS 3.831-ACRES

TOTAL AREA = 11.924 ACRES



LEGEND

- IPS = IRON PIN SET
- IPF = IRON PIN FOUND
- PP = POWER POLE
- R/W = RIGHT OF WAY
- V- = WATER LINE
- G- = GAS LINE
- F- = FENCE LINE
- LLL = LAND LOT LINE
- LL = LAND LOT
- CT = CRIMP TOP
- OT = OPEN TOP
- C = CENTER LINE
- R = PROPERTY LINE
- RF = ROW OR FORMERLY
- R.C.P. = REINFORCED CONC. PIPE
- C.M.P. = CORRUGATED METAL PIPE
- M.S. = NOT TO SCALE
- P = POWER LINE

EQUIPMENT USED FOR MEASUREMENT
 ANGULAR TOPCON GTS - 383
 LINEAR E.B.A. TOTAL STATION

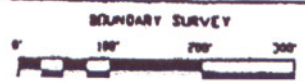
THE FIELD DATA UPON WHICH THIS PLAT IS BASED HAS A CLOSURE PRECISION OF ONE FOOT IN 16800 FEET AND AN ANGULAR ERROR OF 95" PER ANGLE POINT AND WAS ADJUSTED USING COMPASS RULE

THIS PLAT HAS BEEN CALCULATED FOR CLOSURE AND IS FOUND TO ACCURATE WITHIN ONE FOOT IN 1891355 FEET.

THIS PROPERTY IS NOT LOCATED WITHIN THE 100 YEAR FLOOD AREA PER OFFICIAL FLOOD HAZARD MAPS PANEL NUMBER 130304 8125 A

NOTE:
 THE CENTER OF GEORGE COVER ROAD MAY VARY FROM ITS LOCATION AS PER REF # 1

- REFERENCES**
- 1) PLAT FOR BETTY HIA BY FARLEY-COLLINS DATED 8/03/73 LAST REVISED 6/8/81
 - 2) PLAT FOR DAVIS DATED 2/05/87 BY YOUNGMAN & ASSOC



SURVEY FOR
FORREST L. DAVIS
 ALTA F. DAVIS

LAND LOT 129, 130
 DISTRICT SOUTH HALF 13TH
 COUNTY SAUSON SECTION
 STATE GEORGIA

Youngman Surveying, Inc.
 109 Clark Road