

# Bowen Homes Res-4 development

WINTON SWEATMAN

0/8 1113 PAGE 134

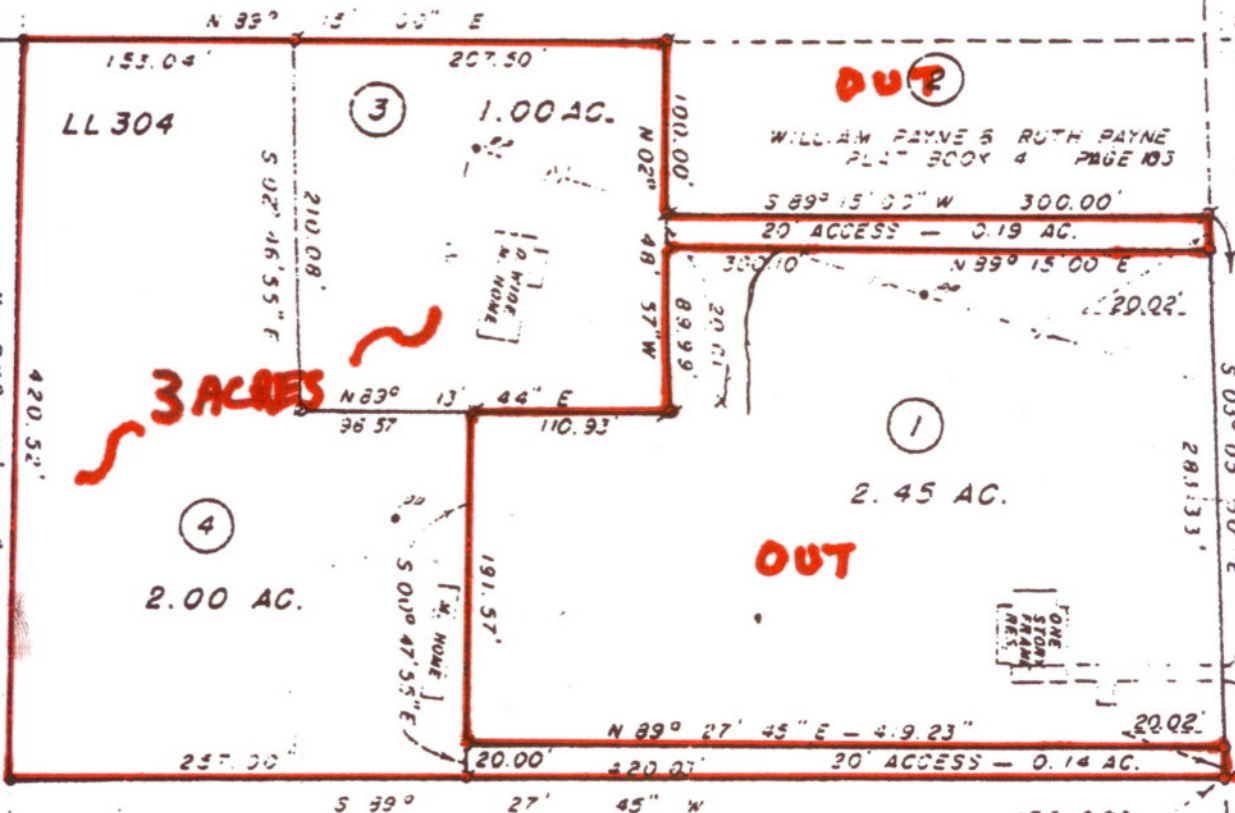
272

LL 273

05

LL 304

R/W  
PINEY GROVE ROAD - 40' R/W



Bowen Homes Res Development  
RUBY HANSARD SWEATMAN

FORMERLY HOYT B. BAGWELL  
NOW FORSYTH CO. D.O.T.  
BOOK 539 PAGE 214

D.O.T. 6.63 AC

**NOTES:**  
 The field data upon which this plat is based has a closure of one foot in 14,700 feet and an angular error of 0.3 seconds per angle point and was adjusted using the compass crandall least squares rule.  
 The survey was made with a six seconds electronic theodolite and distance meter.  
 This plat has been calculated for closure and is found to be accurate within one foot in 100,000 feet.

I HEREBY CERTIFY THAT THIS PLAT IS A CORRECT REPRESENTATION OF THE LANDS PLATTED AND HAS BEEN PREPARED IN CONFORMITY WITH THE MINIMUM STANDARDS AND REQUIREMENTS OF LAW.  
 Robert Gerald Sadler  
 GEORGIA REGISTERED LAND SURVEYOR NO 1444

LLL